

QUICK START GUIDE

HUB

WIRELESS REMOTE

Buff[®]

The HUB remote will function as a standard trigger, similar to our CyberSync Trigger Transmitter, and provides all of the necessary communication between any camera brand and a Paul C. Buff, Inc. flash unit. To utilize the TTL and HSS capabilities of a Paul C. Buff, Inc. flash unit that is equipped with those features (i.e. the LINK), a camera specific version of the HUB will be required.

ATTACHING THE HUB TO YOUR CAMERA

Slide the bottom of the HUB onto your camera's hot shoe.
Turn the locking wheel clockwise to lock the HUB on to your camera.

CHARGING THE HUB

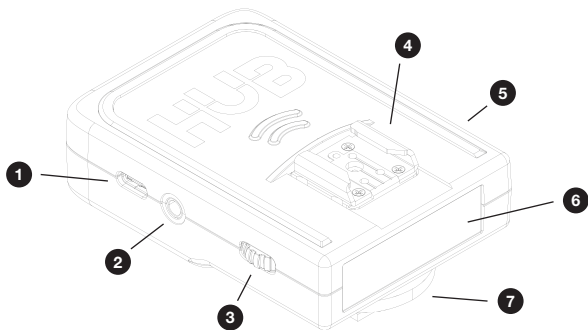
To charge the HUB plug the USB-C side of the included charging cable directly into the HUB. Then plug the USB-A side into a wall outlet connector.

WHAT'S INCLUDED:

- (1) HUB Wireless Remote*
- (1) USB-A to USB-C Charging Cable*
- (1) Rechargeable Internal Lithium-ion Battery*
- 2-Year Factory Warranty*



info@paulcuff.com | 1.800.443.5542



1 CHARGING PORT

2 SYNC JACK

3 ROTARY WHEEL

4 TOP HOT SHOE

5 POWER BUTTON

6 REAR DISPLAY

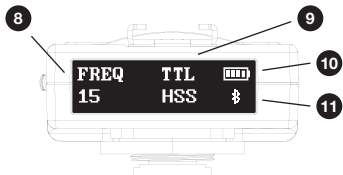
7 LOCKING BOTTOM HOT SHOE
(CAMERA BRAND SPECIFIC)

POWERING THE HUB ON / OFF

Press and hold the POWER button, located on the right side of the HUB, for two seconds.

SENDING A TEST FIRE

Press in on the rotary wheel, located on the left side of the HUB.
This will send a test fire to any flash units that are on the same frequency.



- 8 FREQUENCY**
- 9 TTL/MAN and HSS**
- 10 BATTERY INDICATOR**
- 11 BLUETOOTH**

SETTING THE FREQUENCY

The FREQUENCY ranges from 1 - 16. To set the frequency turn the ROTARY WHEEL until FREQUENCY appears on the display.
Press in on the ROTARY WHEEL to enter the FREQUENCY section.
Turn the ROTARY WHEEL until your desired frequency appears.
Press in on the ROTARY WHEEL to confirm your selection.

ADJUSTING THE DISPLAY BRIGHTNESS

To adjust the display brightness turn the ROTARY WHEEL until BRIGHTNESS appears on the display.
Press in on the ROTARY WHEEL to enter the BRIGHTNESS section.
Turn the ROTARY WHEEL until your desired brightness appears.

BLUETOOTH

By default, BLUETOOTH is ON when the HUB is first activated. To turn BLUETOOTH ON or OFF, turn the ROTARY WHEEL until BLUETOOTH appears on the display. Press in on the ROTARY WHEEL to enter the BLUETOOTH section. Turn the ROTARY WHEEL to toggle between ON and OFF. Press in on the ROTARY WHEEL to confirm your selection.

TTL MODE

To set the HUB into TTL mode, turn the ROTARY WHEEL until TTL appears on the display. Press in on the ROTARY WHEEL to enter the TTL section. Turn the ROTARY WHEEL to toggle between TTL and MAN (for manual). Press in on the ROTARY WHEEL to confirm your selection.

HSS MODE

The HUB will enter HSS mode automatically when your camera is set above its max sync speed. The HUB will also supersede any settings found on the LINK. For example, if the LINK is set to COLOR MODE but you are now shooting above your camera's max sync speed, the HUB will then adjust the LINK and place it into HSS MODE.

ABOUT

To access the serial number, current firmware version, and FCC ID within the HUB interface, first turn on the HUB and use the rotary dial to scroll to the 'ABOUT' section. Then, once 'ABOUT' appears on the display, press in on the rotary dial to enter the section. Finally, scroll using the rotary dial to view each item.

FCC ID: OUEPCBHUB

FCC COMPLIANCE STATEMENT:

This device complies with part 15 of the FCC Rules.

Operation is subject to the following two conditions:

- (1) This device may not cause harmful interference, and
- (2) This device must accept any interference received, including interference that may cause undesired operation.

NOTE: This equipment has been tested and found to comply with the limits for a Class B digital device, pursuant to Part 15 of the FCC Rules. These limits are designed to provide reasonable protection against harmful interference in a residential installation. This equipment generates, uses and can radiate radio frequency energy and, if not installed and used in accordance with the instructions, may cause harmful interference to radio communications.

However, there is no guarantee that interference will not occur in a particular installation. If this equipment does cause harmful interference to radio or television reception, which can be determined by turning the equipment off and on, the user is encouraged to try to correct the interference by one or more of the following measures:

Reorient or relocate the receiving antenna.

Increase the separation between the equipment and receiver.

Connect the equipment into an outlet on a circuit different from that to which the receiver is connected.

Consult the dealer or an experienced radio/TV technician for help.

Warning: Changes or modifications to this unit not expressly approved by the part responsible for compliance could void the user's authority to operate the equipment.

FCC Radiation Exposure Statement

The device has been evaluated to meet general RF exposure requirement.

The device can be used in portable exposure condition without restriction.